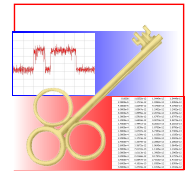


## DataAccess 9.0



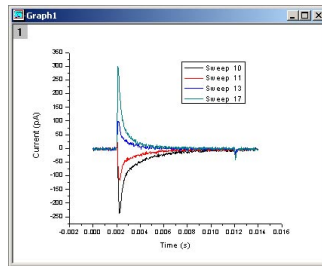
Bruxton DataAccess allows data analysis programs to directly read electrophysiology files.

### Features

- Direct access to electrophysiology data from your analysis program. Read files without the recording program.
- Graphical data display. Selecting data is easy and reliable.
- Reads both stimulus and response. Simplifies plotting response against stimulus.
- Standard point-and-click interface is intuitive to learn and fast to use.
- Script interface. Create advanced custom analysis and graphing scripts.

### File Formats

- Axon Instruments **pClamp** 6 through 9, and **AxoScope**. Reads ABF and ATF files
- Bruxton **Acquire** through Acquire 5
- Cambridge Electronic Design (CED) **Spike2** (SON) files
- HEKA **Pulse** and **PatchMaster**



### Analysis Programs

Analysis programs are supported only under **Microsoft Windows**.

- Microsoft **Excel** 97 through XP
- Systat **SigmaPlot** 2000 through 9
- Microsoft **Visual Basic** 97 through XP. In Visual Basic, only the DataAccess script interface is supported.
- WaveMetrics **IGOR Pro** 4 and 5.

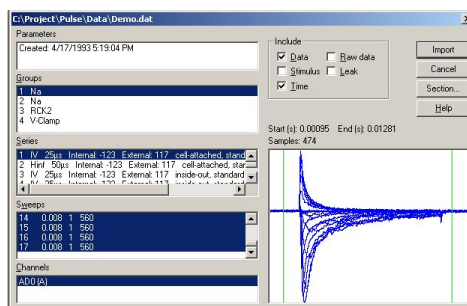
### Faster, Easier Data Handling

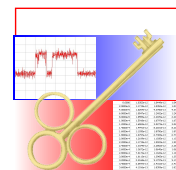
- Fast and reliable data import. Select the data of interest, viewing the data and the experiment structure graphically. The data is imported directly with the correct scaling. You do not have to remember or retype scaling factors.
- Low cost. Import data directly on your office or portable computer, using only DataAccess and your analysis program. You do not need an additional license for your recording program. Import data recorded by collaborators, even if they do not use the same recording program as you do.
- Custom automated plotting and analysis. Write scripts using your analysis program. The scripts can call DataAccess to interpret files, and read data in files.

### Simple Operation

DataAccess provides a point-and-click interface that operates as an import filter in your data analysis program. In most analysis programs, after you install DataAccess, you need only select the type of file to load.

After you choose the file type, you select the data file itself. DataAccess then presents a display of the data in the file. You select the data of interest, then press 'Import'. The data appears in the analysis program.





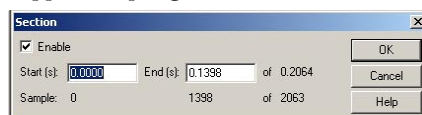
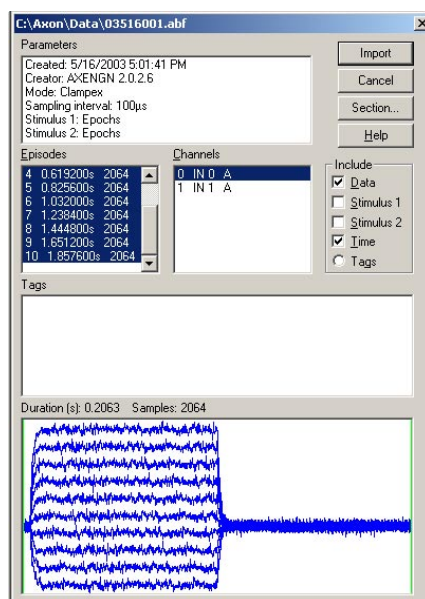
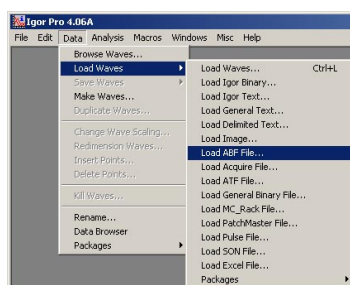
DataAccess lets you choose to import one or more sweeps at a time. You can choose to import the data alone, or the data and any associated stimulus.

You can import entire sweeps, or segments of sweeps. You can determine the segment to import either graphically, by moving the import limits in the data display, or by explicitly specifying the start and end times. This feature is particularly useful when importing portions of long continuous recordings into data analysis programs that do not process large data sets well.

## Scripting

DataAccess provides extensive scripting support for data analysis programs that support scripting. You can use this feature to write custom data analysis scripts.

DataAccess is supplied with an extensive Programmers Reference manual.



## Ordering

DataAccess is distributed electronically, with a serialized activation key. You can order DataAccess from Bruxton Corporation or a distributor. Please check the Bruxton Web site ([www.bruxton.com](http://www.bruxton.com)) for a list of distributors.

If you purchase Pulse or PatchMaster from HEKA or a HEKA distributor, you can probably purchase DataAccess from your supplier. Most distributors of HEKA Pulse and PatchMaster also supply DataAccess.

If you use Systat SigmaPlot, you may find it convenient to order the Systat Electrophysiology Module from Systat. This module is a version of DataAccess that provides support specifically for SigmaPlot. The product is available from Systat directly.